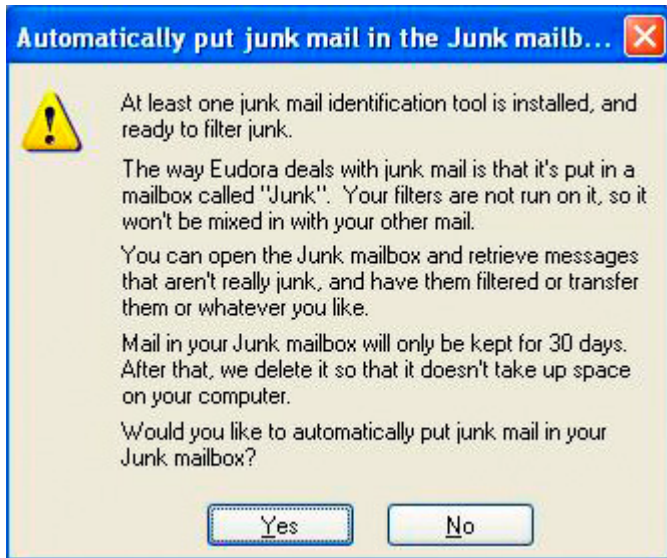


## Eudora 6.2.1: SpamWatch

**SpamWatch is available only to Paid mode users.**

### Setting Up SpamWatch:

Initiating SpamWatch is as simple as saying "yes" to the invitation to use Eudora's Junk mailbox during Eudora 6.x installation.

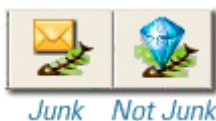


### Training SpamWatch:

With unwanted mail selected, a simple click on the "Junk" command in the Message menu trains Eudora that the selected mail is Junk. SpamWatch then adds the corresponding words to its list of criteria that are known to appear in spam. Conversely, wanted email that ends up in the Junk mailbox can be deemed "Not Junk" through the same menu and SpamWatch will learn that this is "wanted mail".

Spammers continually learn new ways to get around any spam-block, so training is essential. With training, Eudora's SpamWatch grows to keep Junk mail quarantined as spammers experiment with new code breaking tricks.

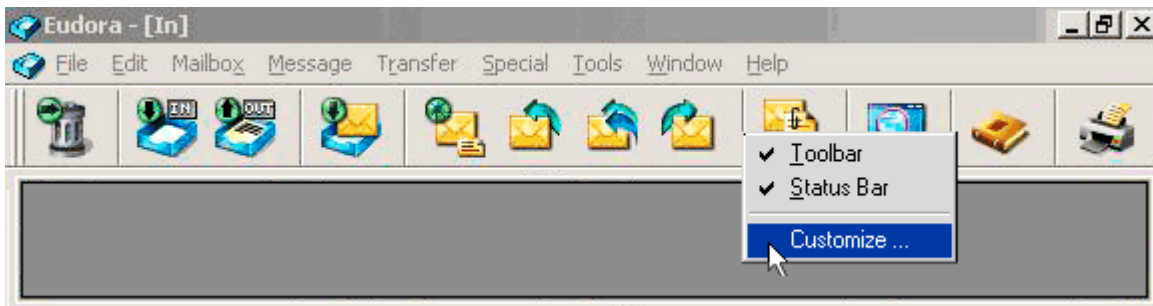
**Add the Junk and Not Junk icons to the toolbar for convenient access to the Junk commands:**



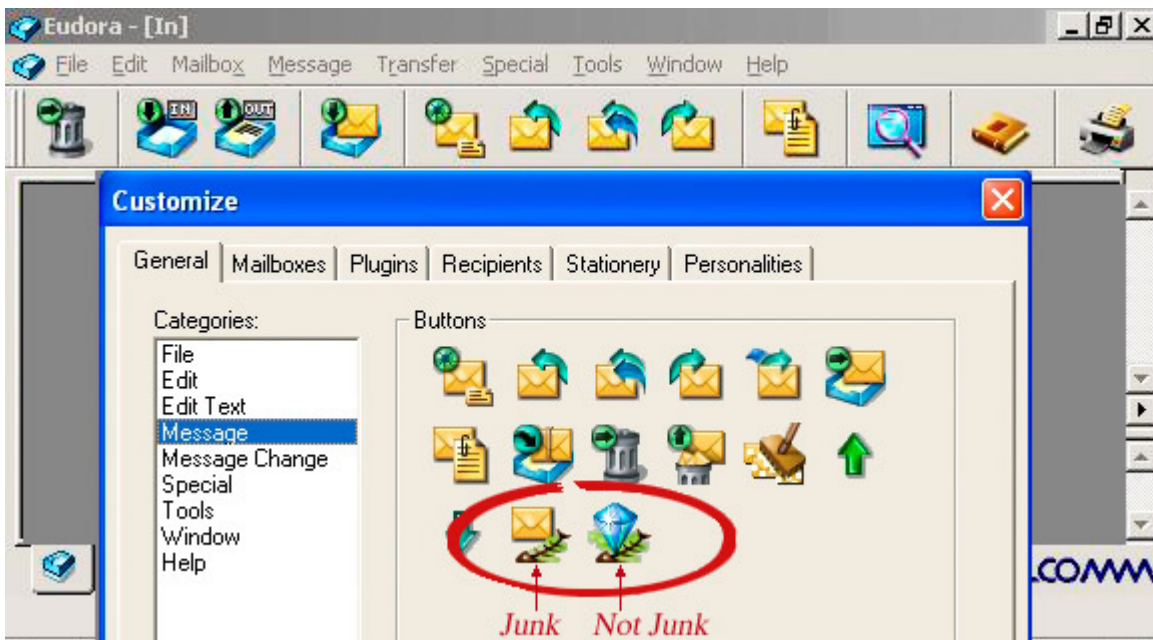
### Here's How! Windows Users.

1. Right click anywhere on the Toolbar to display a drop-down menu.

From the menu, choose Customize:



2. In the Customize dialog window, under Categories, choose Message. Drag the Junk and Not Junk icons to the toolbar:

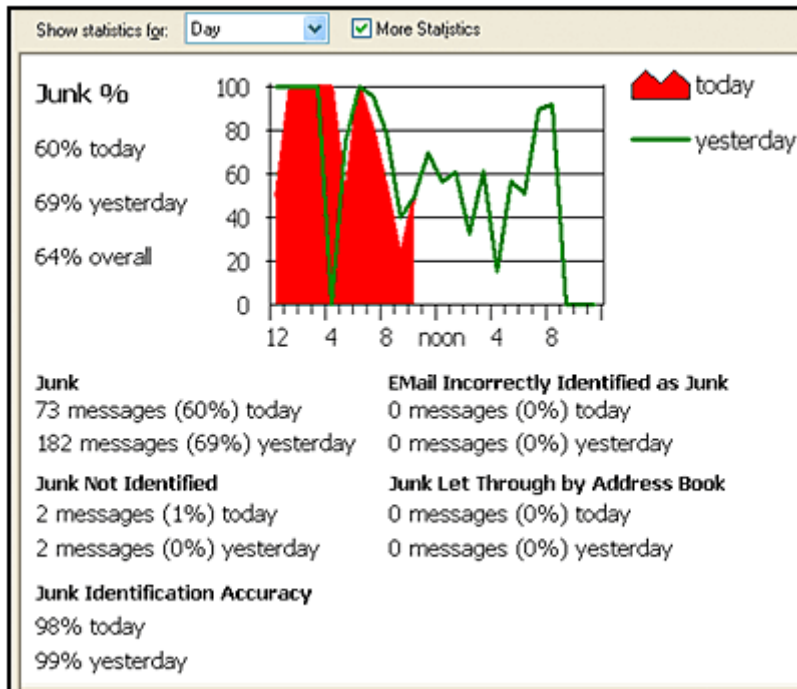


The Junk and Not Junk icons will now be seen in the toolbar. In Eudora for Windows, the mouse-over text labels the toolbar commands "Mark as Junk" and "Mark as Not Junk".

### **SpamWatch Statistics:**

See how well SpamWatch is doing. With junk mail statistics, users can total up exactly how

much junk they receive. From the Tools menu, the Statistics selection charts and quantifies the nature of a user's email, in this case how much mail is Junk. Statistics was introduced in Eudora 5 and has now been enhanced to include information about incoming Junk mail.



## Junk Mail (Paid mode only)

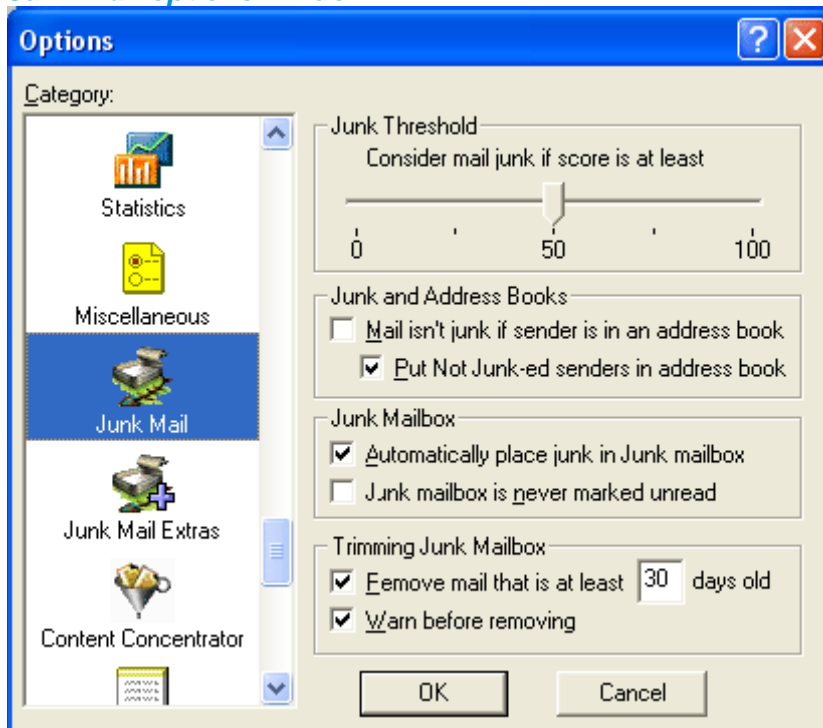
You can change the Junk Mail options in the Junk Mail options window. In this window, you can determine at what junk score level you wish your messages to be filtered and adjust other junk mail options.

### To display the Junk Mail options window

1. From the Tools menu, choose **Options**.
2. Scroll and click the **Junk Mail** icon.

*The Junk Mail options window appears*

## Junk Mail options window



Select the options you want to change. Following are the descriptions of the options:

**Junk Threshold**—Eudora distinguishes junk mail by a scoring system. You can adjust this scoring threshold by using the slide bar indicator. If you slide the arrow to a lower number, Eudora filters out more junk mail but may also mistakenly filter more valid mail to the Junk mailbox. If you slide the arrow to a higher number, Eudora filters less junk mail but is less likely to incorrectly filter valid mail. The default setting is 50.

## Junk & Address Books

**Mail isn't junk if the sender is in an address book**—Check this box to indicate that mail coming from people in your address book(s) should never be marked as junk mail.

**NOTE:** The following field does not work unless you check the *Mail isn't junk if the sender in an address book* box.

**Put Not Junk-ed senders in address book**—Check this box to indicate that senders of valid mail found in the Junk mailbox are to be added to your address book when you select Not Junk from the Message menu. Future mail from this sender will never be filtered to the Junk mailbox again. This function works with the previous field.

### **Junk Mailbox**

**Automatically place junk in Junk mailbox**—Check this box if you want Eudora to filter what it considers junk mail to the Junk mailbox. If this is not checked, junk mail appears in your In box and is scored. To see the junk mail score, go the *Mailboxes* option in the Tools menu and check the Junk box (located under the

Show Mailbox Columns section).

**Junk mailbox is never marked unread**—Check this box if you don't want your junk mailbox to indicate that it contains unread mail.

### Trimming Junk Mailbox

**Remove mail that is at least \_ days old**—Enter the number of days you'd like Eudora to keep junk mail in the Junk mailbox. Eudora scans the Junk mailbox periodically and removes the messages after the set number of days you enter in this field.

**Warn before removing**—Check this box if you want Eudora to warn you that junk mail messages are about to be removed from the Junk mailbox.

## **Junk Mail Extras (Paid mode only)**

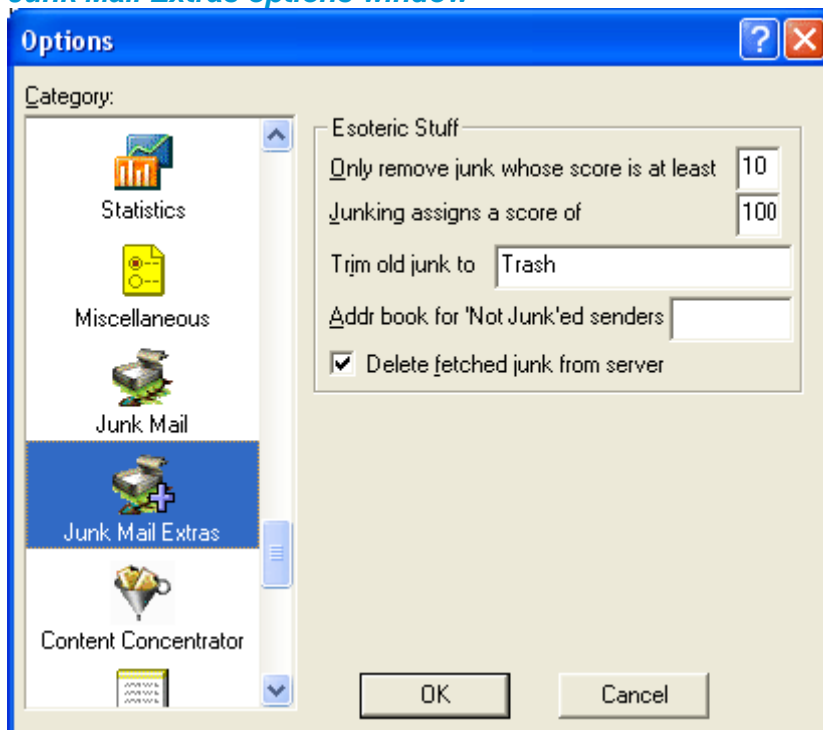
You can further change the Junk Mail options in the Junk Mail Extras options window.

### To display the Junk Mail Extras options window

1. From the Tools menu, choose **Options**.
2. Scroll and click **Junk Mail Extras**.

The Junk Mail Extra options window appears.

#### **Junk Mail Extras options window**



Select the options you want to change. Following are the descriptions of the options:

**Only remove junk whose score is at least \_**—A message is moved from the In mailbox to the Junk mailbox if the score is at least the number you enter here.

**Junking assigns a score of \_**—When you indicate in Eudora that you would like a message

to be junked, the score you enter here is assigned to that message.

**Trim old junk to \_**—You can select where they would like the Junk mail to be stored when it is removed from the Junk mailbox, for example another mailbox or Trash.

